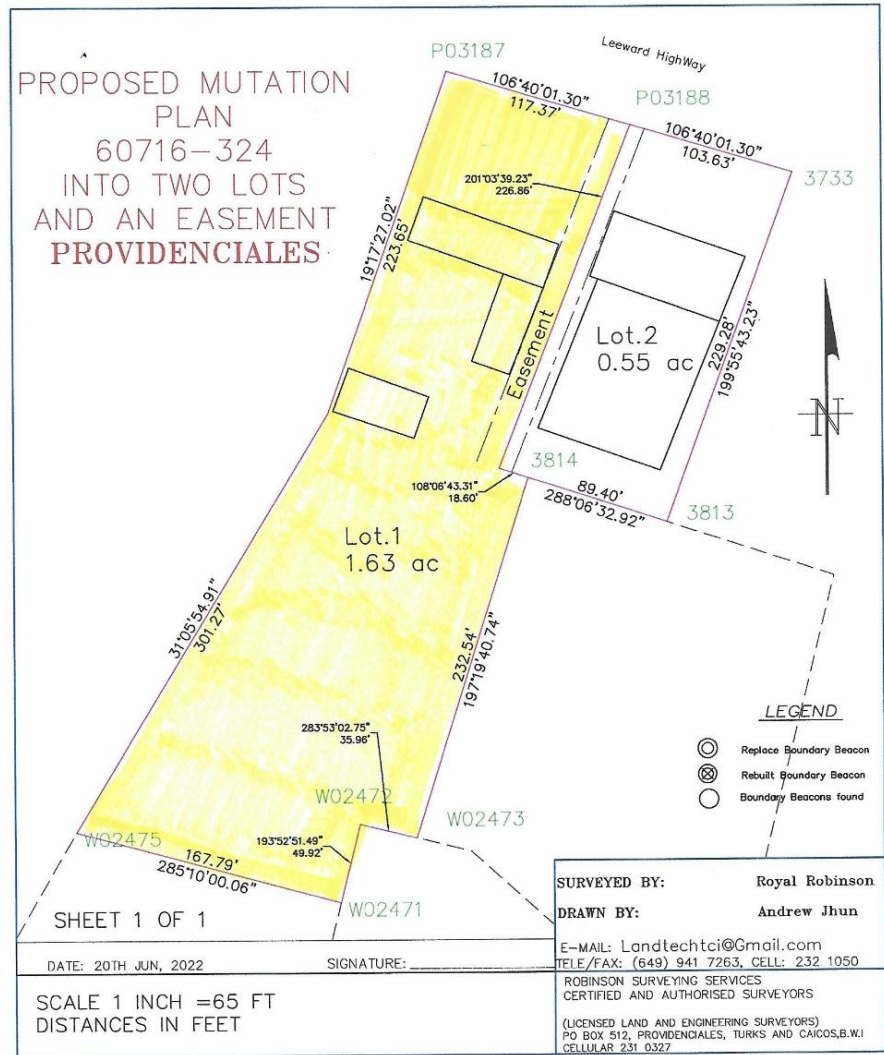


Providenciales, Turks and Caicos Islands

MLS# 2500291

\$1,800,000





Sam Hunt
(649) 331-4066
sam@hamilton.tc

A unique commercial property comprising 1.63 acres and boasting 117 linear feet along Leeward Highway, conveniently located between Downtown and Turtle Cove. Adjacent to Suzie Turn, the property is central, high visibility and easily accessible. Currently in use as a car dealership, but zoned for both commercial and apartment development, this property presents as both a remarkable investment and development opportunity. The existing buildings comprise a Main Building of 2,682 square feet and Workshops of 2,748 square feet, with ample room for expansion. Rear of the property is accessed via Turtle Creek Drive. Call the listing agent today to arrange a viewing.

Essential Information

Property Type Commercial	Status Conditional	MLS# 2500291	Listing Type Building and Land
------------------------------------	------------------------------	------------------------	--

Key Details

View Leeward Highway	Lot Size 1.63 Acres
Year Built 2000	Sq Ft 2,500

Property Features

Unit Commercial	Construction Concrete	Cooling Split	Drive Way Paved
Exterior Features Fully Fenced	Flooring Concrete	Lot Features Cleared - Part	Side of Road South

Updated: 05/15/2026, 12:00:07 AM

The data relating to real estate for sale/lease on this website comes in part from a cooperative data exchange program of the Turks and Caicos Multiple Listing Service (MLS) in which these Brokers participate (TCREA). The properties displayed may not be all the properties in the Turks and Caicos MLS database, or all of the properties listed with Brokers participating in the cooperative data exchange program. Properties listed by Brokers other than this Broker/Agent are marked with the IDX Symbol, indicating an agreement to exchange property information. Detailed information about such properties is noted as Courtesy of: Turks and Caicos Real Estate Association. Information provided is thought to be reliable but is not guaranteed to be accurate. You are advised to verify facts that are important to you. No warranties, expressed or implied, are provided for the data herein, or for their use or interpretation by the user. This information is protected from unlawful duplication by copyright.